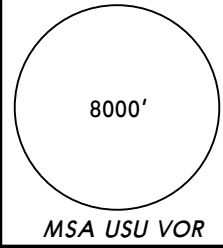
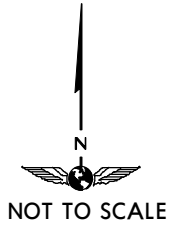


Apt Elev
102'

Alt Set: hPa Trans level: By ATC Trans alt: 8000'
1. RNP 1 required.
2. GNSS required.
3. RADAR not required.



DABLI 2 ARRIVAL
(RWY 25)



NO VALIDO PARA NAVEGACION REAL

DABLI
S54 30.0
W067 40.1

At or above
FL 140



EDPAN
S54 39.8
W067 39.0

At or above
FL 100

FL 100
344°



WH213
S54 43.8
W067 38.5

At or above
8000'

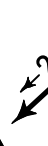


WH214
S54 47.8
W067 38.1

At 6500'

AMVUK
S54 49.1
W067 40.5

At 6500'



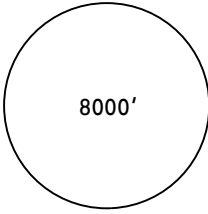
USHUAIA
113.7 USU
S54 50.3 W068 17.1

LOC DME
111.3 US

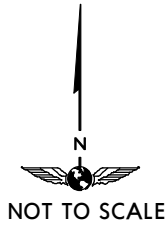
ARGENTINA
CHILE

PUERTO WILLIAMS
D(H) 114.9 PWL
S54 55.8 W067 37.3

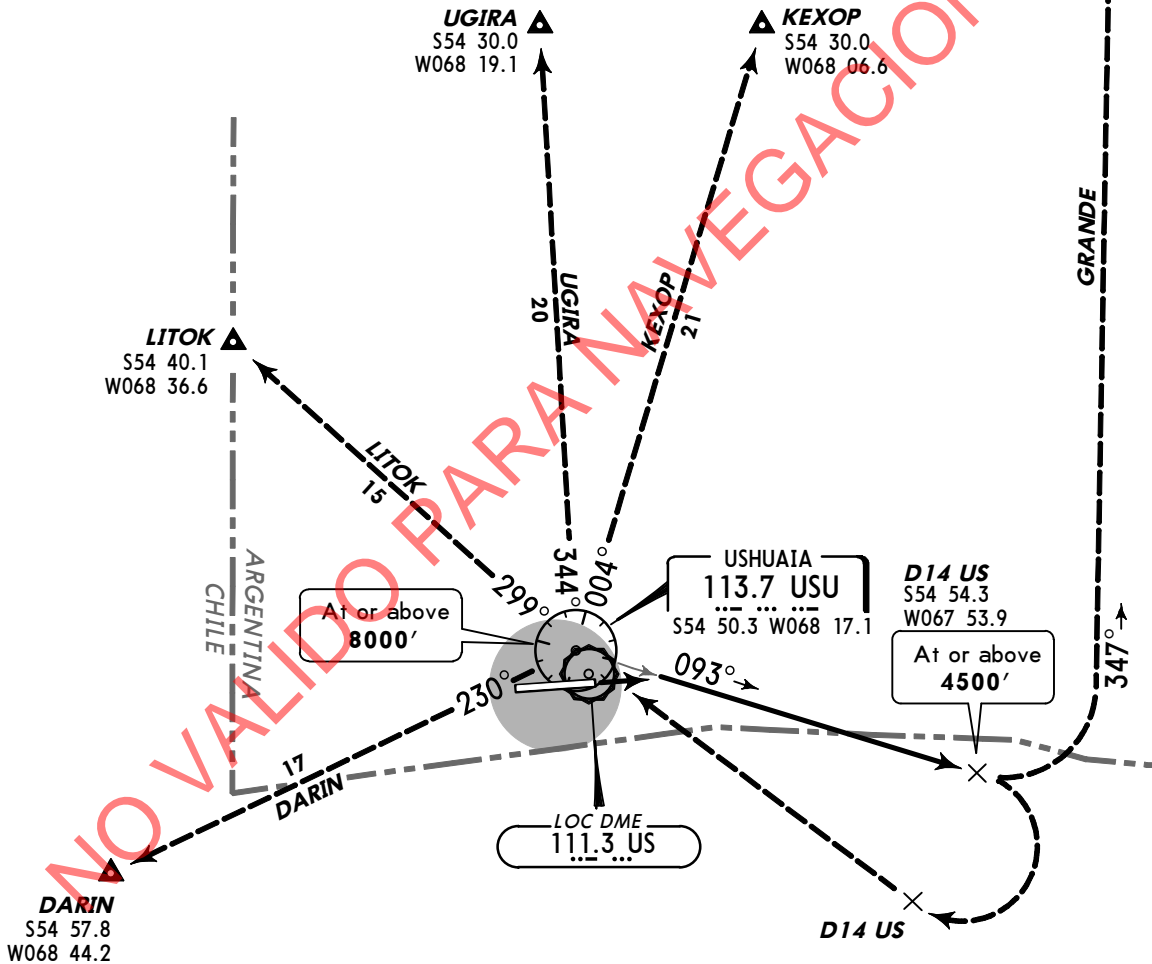
Direct distance from AMVUK to:
Malvinas Argentinas Apt **22 NM**

Apt Elev 102'	Trans level: By ATC Trans alt: 8000'	 8000' MSA USU VOR
-------------------------	---	---

USHUAIA 2A DEPARTURE
[USU2A]
(RWY 07)



RIO GRANDE
D 117.3 GRA
S53 46.5 W067 44.7



This SID requires the following take-off minimums:
Ceiling Not required, Visibility 800m and minimum climb gradient of 5.3%.

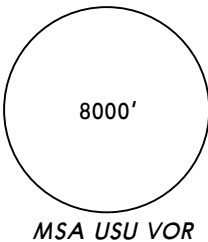
Gnd speed-KT	75	100	150	200	250	300
5.3% V/V (fpm)	403	537	805	1073	1342	1610

INITIAL CLIMB

Intercept USU R-093 outbound until D14 US.

TRANSITIONS

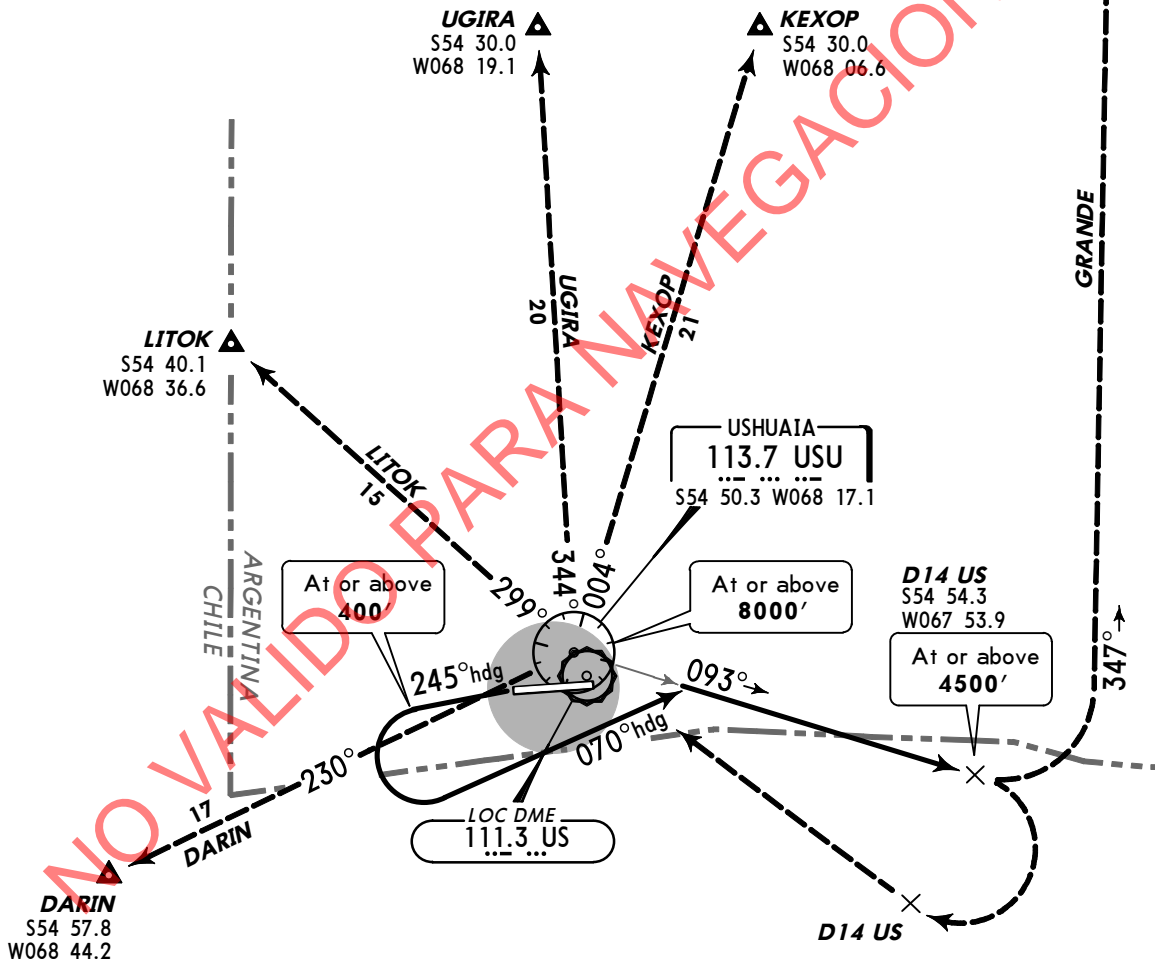
DARIN, KEXOP, LITOK, UGIRA	Turn RIGHT and return to USU. Then join the corresponding airway.
GRANDE	Climbing LEFT turn to 8000' to intercept GRA R-167 to GRA.

Apt Elev 102'	Trans level: By ATC Trans alt: 8000'	
-------------------------	---	---

USHUAIA 2B DEPARTURE
[USU2B]
(RWY 25)



RIO GRANDE
D 117.3 GRA
S53 46.5 W067 44.7



This SID requires the following take-off minimums:
Ceiling Not required, Visibility 800m and minimum climb gradient of 5.3%.

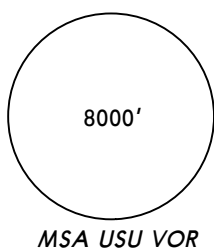
Gnd speed-KT	75	100	150	200	250	300
5.3% V/V (fpm)	403	537	805	1073	1342	1610

INITIAL CLIMB

After take-off **MAINTAIN** runway heading, then proceed on a 245° heading to **400'**, then turn LEFT climbing on a 070° heading to intercept USU R-093 to D14 US.

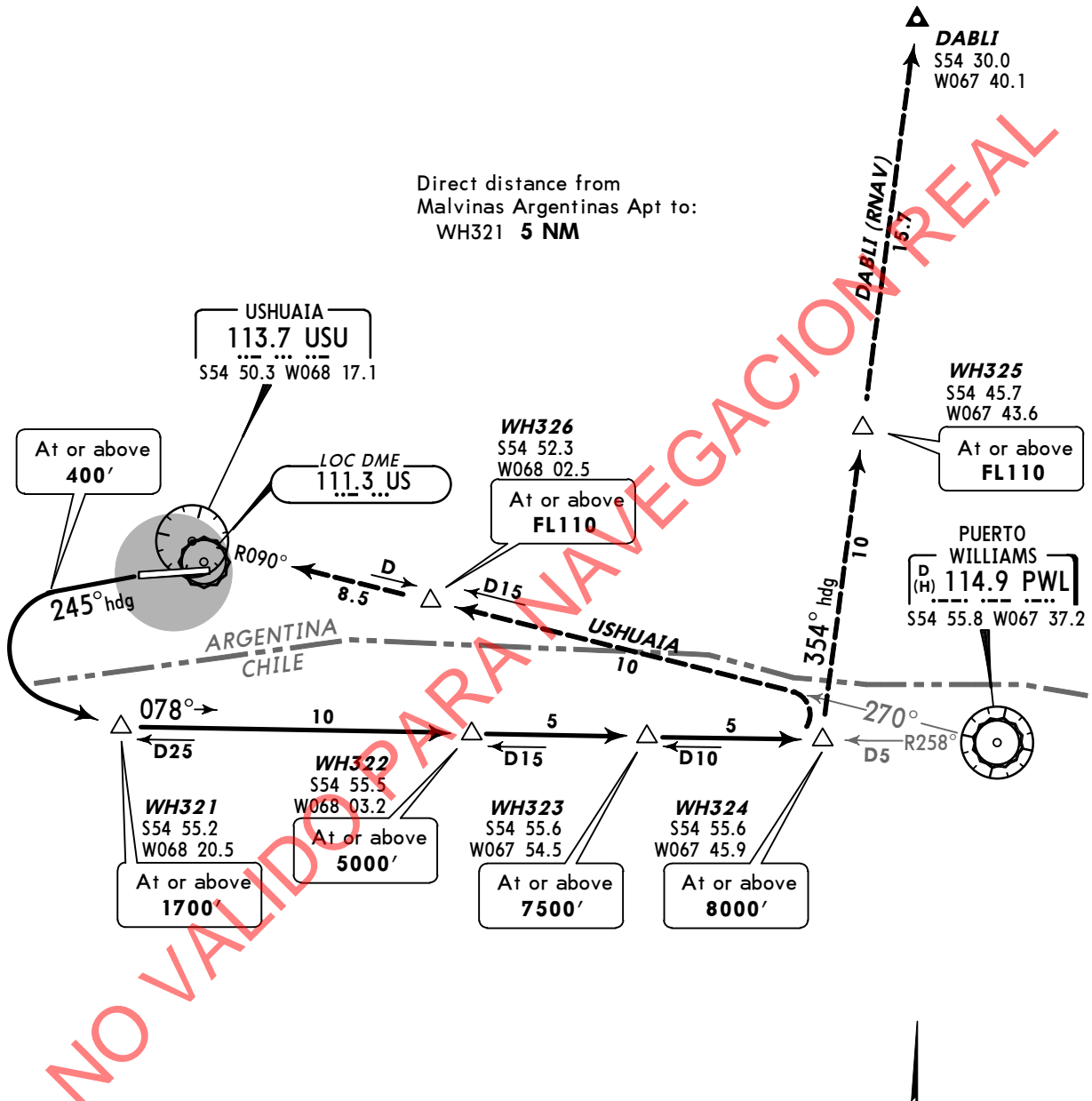
TRANSITIONS

DARIN, KEXOP, LITOK, UGIRA	Turn RIGHT and return to USU. Then join the corresponding airway.
GRANDE	Climbing LEFT turn to 8000' to intercept GRA R-167 to GRA.

<p><i>Apt Elev</i> 102'</p>	<p>Trans level: By ATC Trans alt: 8000' DABLI transition: Only with RNAV equipment.</p>	 <p>8000' MSA USU VOR</p>
--	--	--

WILLIAMS 3 DEPARTURE
(RWY 25)

Direct distance from
Malvinas Argentinas Apt to:
WH321 **5 NM**



This SID requires the following take-off minimums:
Ceiling Not required, Visibility 800m, and minimum
climb gradient of: 5.3% to **FL110**.

Gnd speed-KT	75	100	150	200	250	300
5.3% V/V (fpm)	403	537	805	1073	1342	1610

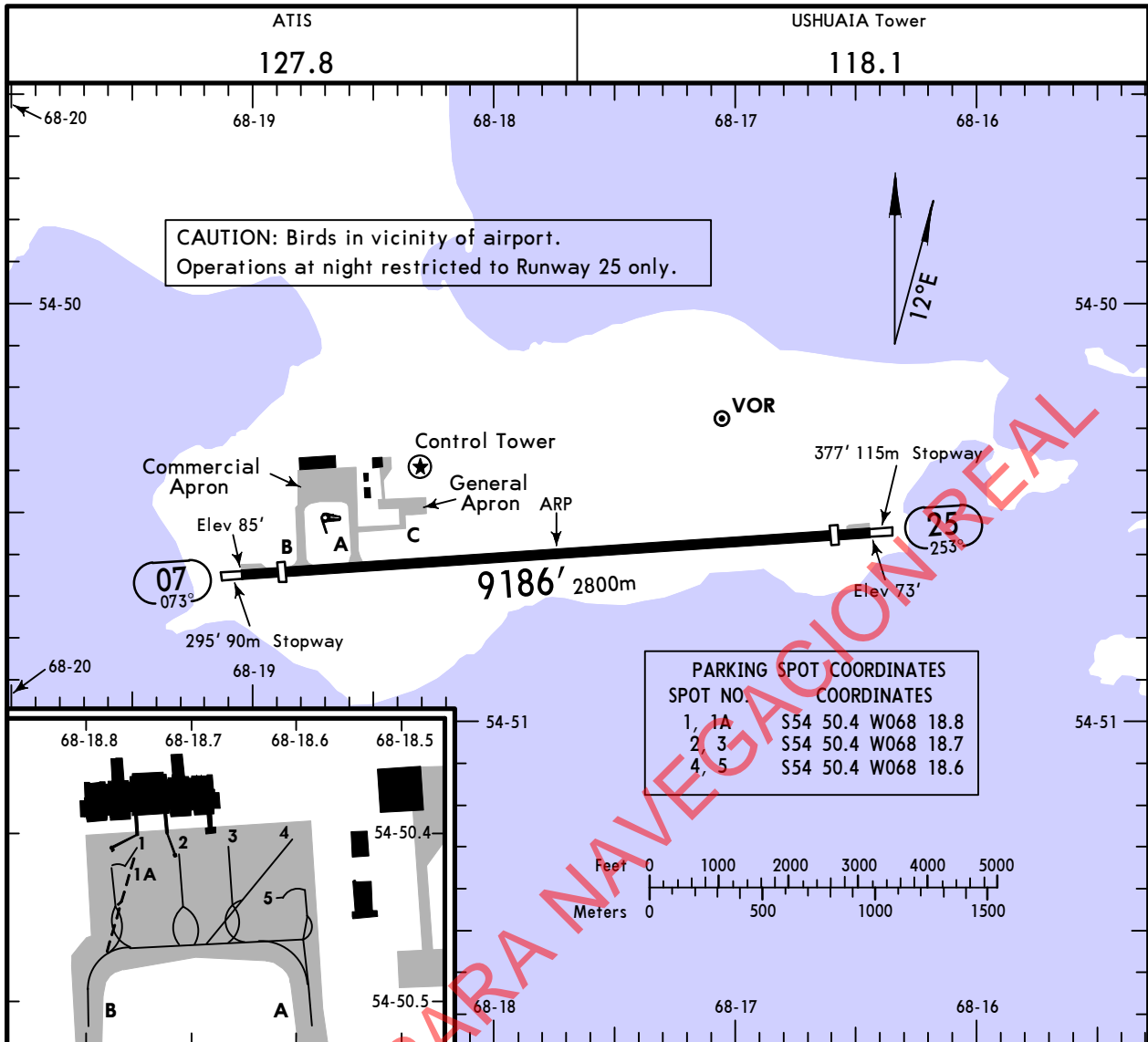


INITIAL CLIMB

After take-off **MAINTAIN** runway heading, then proceed on a 245° heading to **400'**, then climbing LEFT turn to WH321 (intercept PWL R-258) climbing to WH324.

TRANSITIONS

DABLI (RNAV)	<p>A. Turn LEFT heading 354° to DABLI. B. With aircraft holding at EDPAN, reach at or above FL110, at WH325 in accordance with instructions from ATC.</p>
USHUAIA	<p>A. Turn LEFT to intercept PWL R-270 or USU R-090 to USU. B. With aircraft over USU, reach at or above FL110, at WH326, D15 PWL or D8.5 US in accordance with instructions from ATC.</p>



ADDITIONAL RUNWAY INFORMATION

RWY		USABLE LENGTHS			WIDTH
		Threshold	LANDING BEYOND Glide Slope	TAKE-OFF	
07	RL REIL	8596'	2620m		148' 45m
25	RL REIL ① PAPI-L (angle 3.5°)	8661'	2640m	9560' 2914m	

① Do not use it outside 5.5 NM on Runway Centerline.

TAKE-OFF

All Rwys

2 Eng 1 hr Take-off Altn Apt Filed - 1 Eng inop		3 & 4 Eng 2 hr Take-off Altn Apt Filed - 1 or more Eng inop		2 Eng Take-off Altn Apt Not Filed		1 Eng		
With RL	Without RL		With RL	Without RL		With RL	Without RL	
	DAY	NIGHT		DAY	NIGHT		DAY	NIGHT
VIS 550m	2500m	NA	Available Landing Minimums	2500m	NA	Available Landing Minimums	3000m	NA

CHANGES: Aprons, ARP, taxilines added.

SAWH/USH

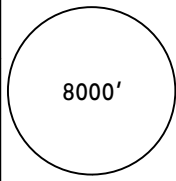
USHUAIA, ARGENTINA

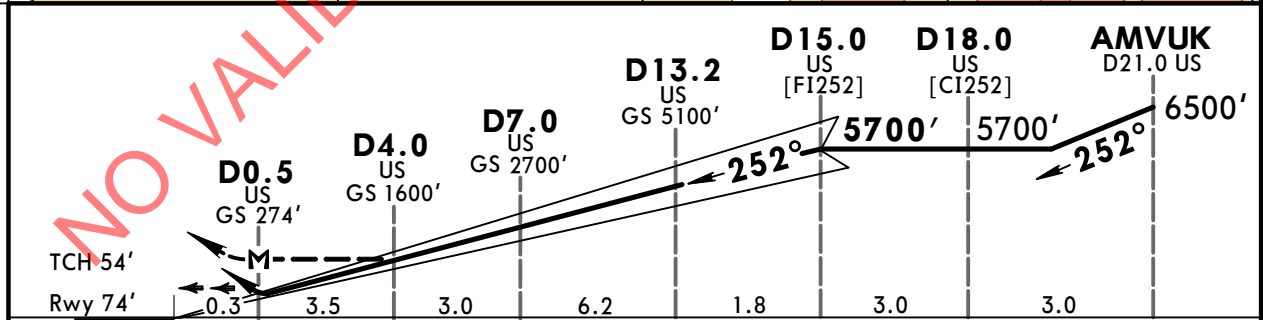
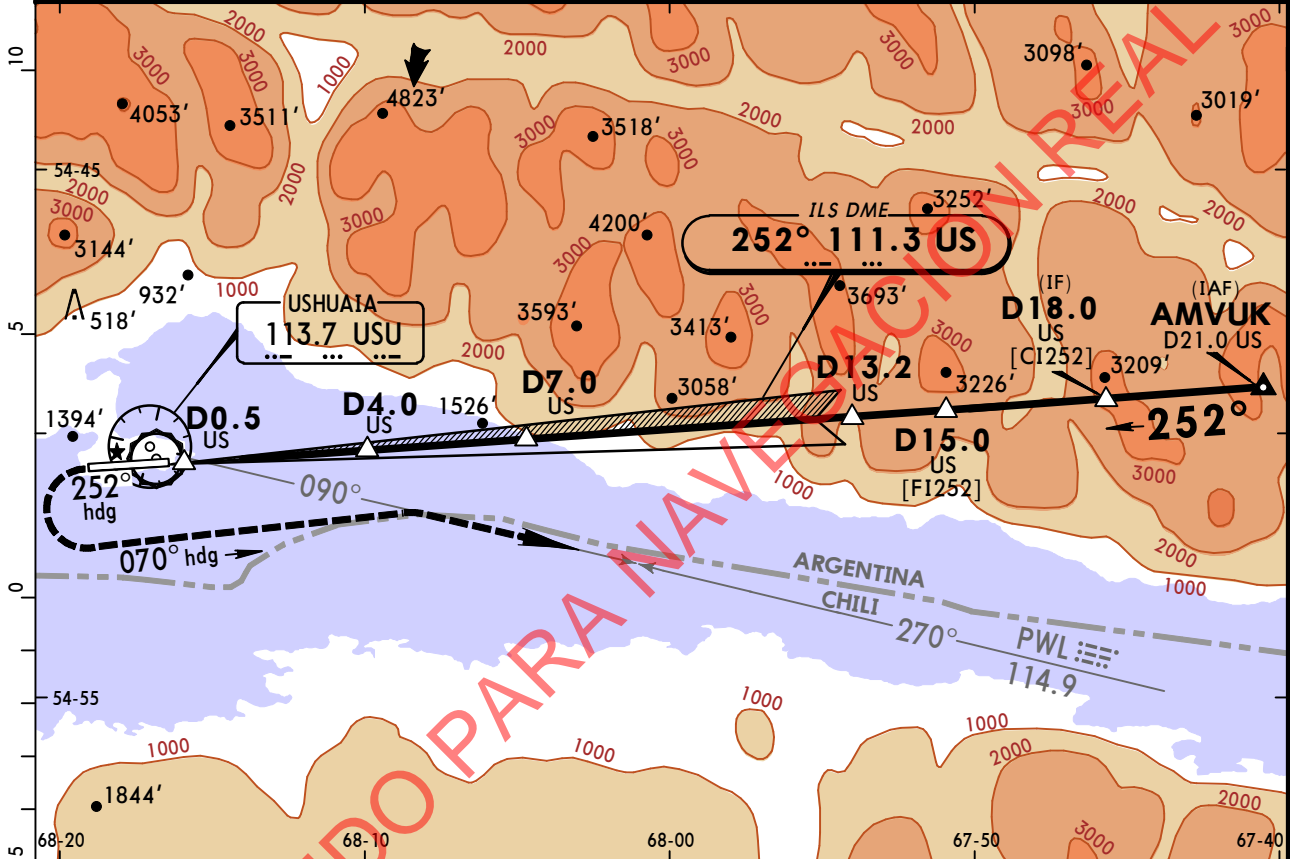
FROM AMVUK No. 3

MALVINAS ARGENTINAS

MISSED APCH CLIMB
GRADIENT MIM 5.0%

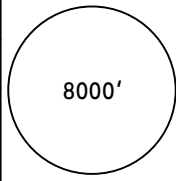
ILS DME Rwy 25

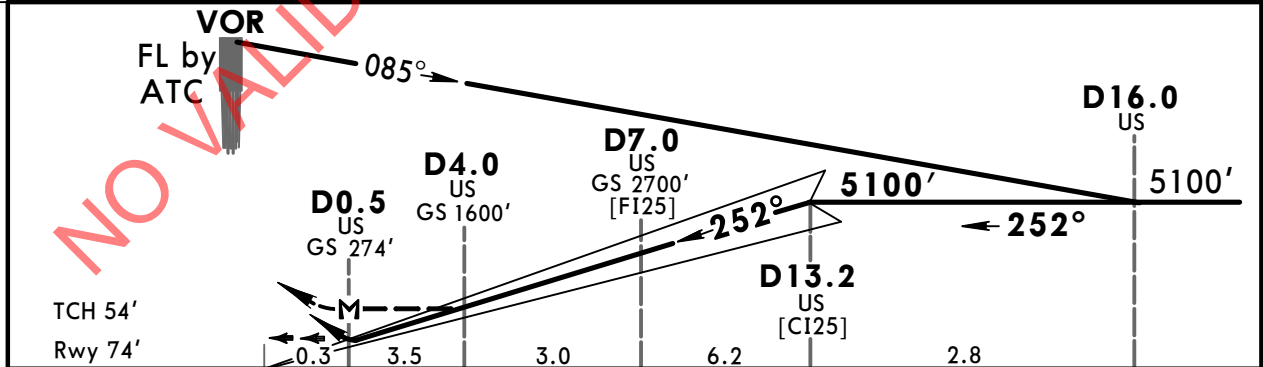
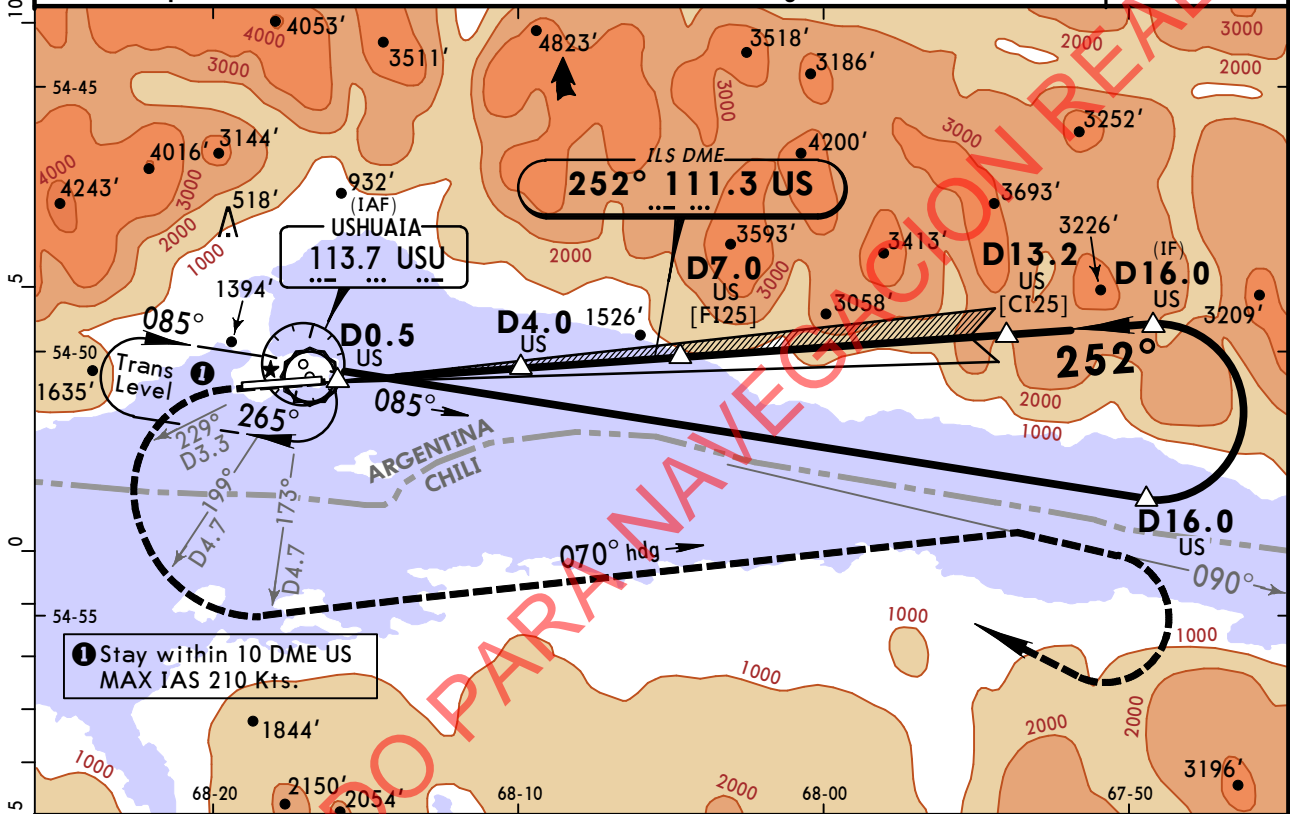
ATIS 127.8		USHUAIA Approach 118.1		USHUAIA Tower 118.1	
LOC US 111.3	Final Apch Crs 252°	Minimum Alt D15.0 US 5700' (5626')	ILS DA(H) 274' (200')	Apt Elev 102' Rwy 74'	
MISSED APCH: Maintain 252° heading climbing to 650', then climbing LEFT turn to 070° heading to intercept USU VOR R-090 outbound or PWL VOR R-270 inbound. Continue climbing to 8000' and follow instructions from CONTROL. Max IAS: 180 Kts until heading 070°.					
Alt Set: hPa Rwy Elev: 3 hPa Trans level: By ATC Trans alt: 8000' 1. DME required. 2. CAUTION: Low level wind shear on final segment.					



Gnd speed-Kts	70	90	100	120	140	160	REIL PAPI-L	252° hdg	650' ↑	
GS	3.50°	434	557	619	743	867				991
Circling: MAP at D0.5 US										
D7.0 to MAP	6.5	5:34	4:20	3:54	3:15	2:47	2:26			

ILS Missed apch climb gradient mim 5.0% DA(H) 274' (200')		LOC (GS out)		CIRCLE-TO-LAND Not Authorized North of Runway 07/25	
A				Max Kts	MDA(H)
B				100	1100' (998') -4600m
C	1200m		NOT AUTHORIZED	135	
D				180	1580' (1478') -4600m
				205	

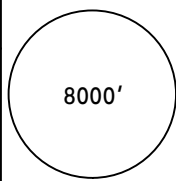
ATIS 127.8		USHUAIA Approach 118.1		USHUAIA Tower 118.1	
LOC US 111.3	Final Apch Crs 252°	Minimum Alt D13.2 US 5100' (5026')	ILS DA(H) 274' (200')	Apt Elev 102' Rwy 74'	
<p>MISSED APCH: Maintain 252° heading climbing to 650', then climbing LEFT turn to 070° heading to intercept USU VOR R-090 outbound (on turn maintain 3.3 DME US through R-229 and 4.7 DME US through R-199 and R-173). Continue climbing to 6000', then climbing RIGHT turn to return to USU VOR at or above 8000' and follow instructions from CONTROL. Max IAS: 180 Kts until heading 070°.</p>					 <p>8000' MSA USU VOR</p>
Alt Set: hPa		Rwy Elev: 3 hPa	Trans level: By ATC		
<p>1. DME required. 2. CAUTION: Low level wind shear on final segment.</p>					

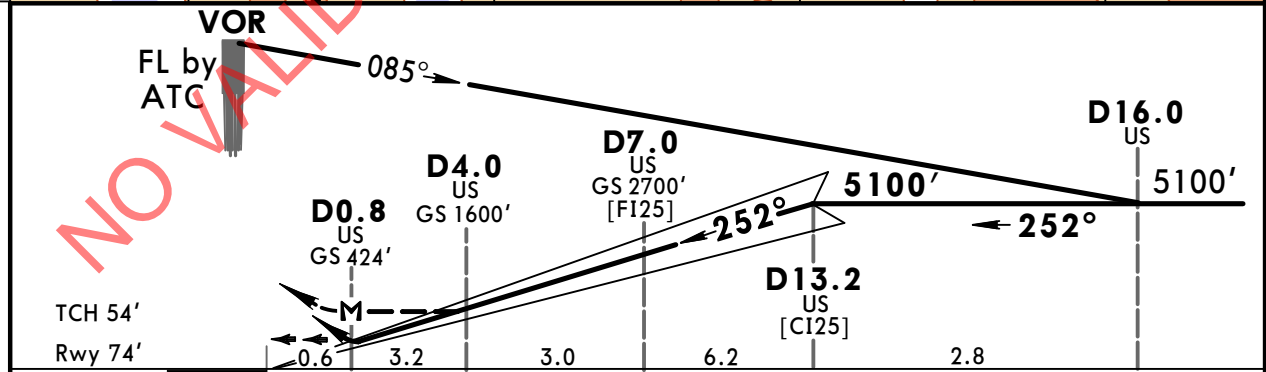
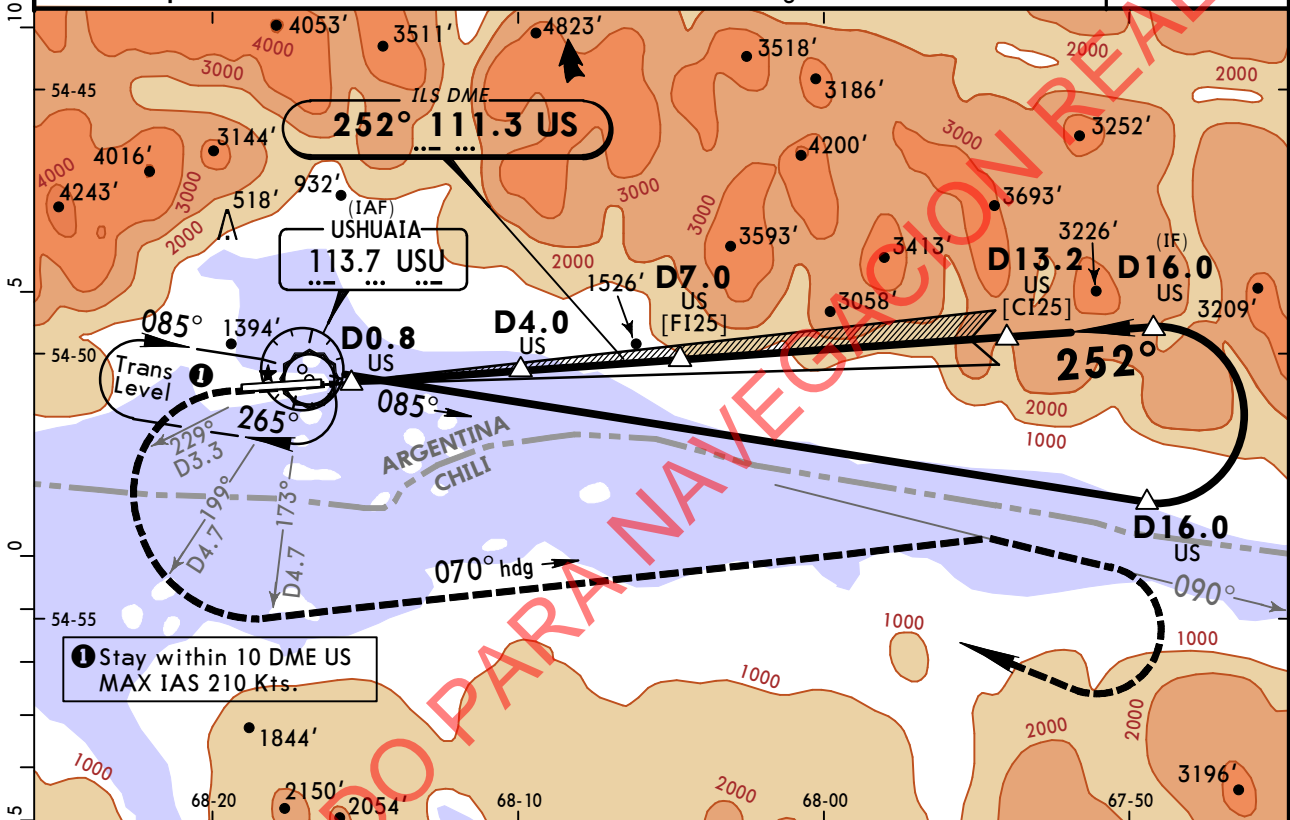


Gnd speed-Kts	70	90	100	120	140	160	REIL	252° hdg	650' ↑
GS	3.50°	434	557	619	743	867			
Circling: MAP at D0.5 US									
D7.0 to MAP	6.5	5:34	4:20	3:54	3:15	2:47	2:26		

STRAIGHT-IN LANDING RWY 25				CIRCLE-TO-LAND	
<p>ILS Missed apch climb gradient mim 5.0% DA(H) 274' (200')</p>				<p>LOC (GS out)</p>	
<p>Not Authorized North of Runway 07/25</p>				<p>Max Kts</p>	
<p>1200m</p>				<p>1100'(998') -4600m</p>	
<p>NOT AUTHORIZED</p>				<p>1580'(1478') -4600m</p>	
A					100
B					135
C					180
D					205

MALVINAS ARGENTINAS

ATIS 127.8		USHUAIA Approach 118.1			USHUAIA Tower 118.1	
LOC US 111.3	Final Apch Crs 252°	Minimum Alt D13.2 US 5100' (5026')	ILS DA(H) 424' (350')	Apt Elev 102' Rwy 74'		 8000' MSA USU VOR
MISSED APCH: Maintain 252° heading climbing to 650', then climbing LEFT turn to 070° heading to intercept USU VOR R-090 outbound (on turn maintain 3.3 DME US through R-229 and 4.7 DME US through R-199 and R-173). Continue climbing to 6000', then climbing RIGHT turn to return to USU VOR at or above 8000' and follow instructions from CONTROL. Max IAS 180 Kts until heading 070°.						
Alt Set: hPa		Rwy Elev: 3 hPa	Trans level: By ATC		Trans alt: 8000'	
1. DME required. 2. CAUTION: Low level wind shear on final segment.						



Gnd speed-Kts	70	90	100	120	140	160	REIL PAPI-L	252° hdg	650' ↑	
GS	3.50°	434	557	619	743	867				991
Circling: MAP at D0.8 US										
D7.0 to MAP	6.2	5:19	4:08	3:43	3:06	2:39	2:20			

STRAIGHT-IN LANDING RWY 25				CIRCLE-TO-LAND	
ILS DA(H) 424' (350')		LOC (GS out)		Not Authorized North of Runway 07/25	
A	1500m	NOT AUTHORIZED		Max Kts	MDA(H)
B				100	1100'(998') -4600m
C				135	
D				180	1580'(1478') -4600m
				205	

SAWH/USH

USHUAIA, ARGENTINA

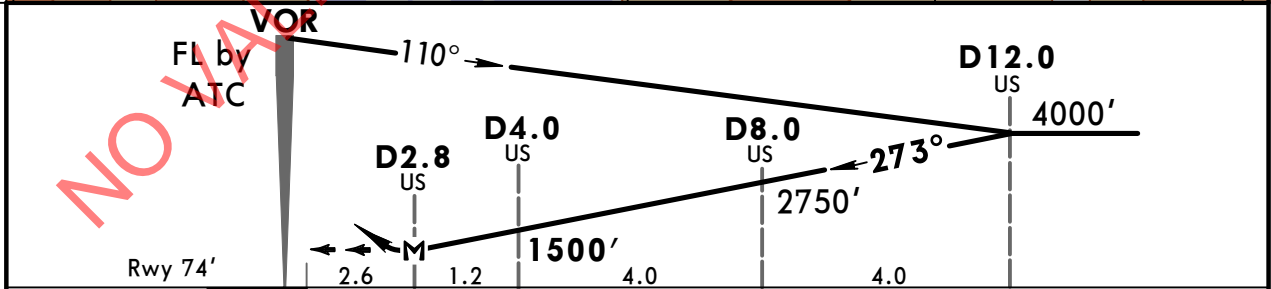
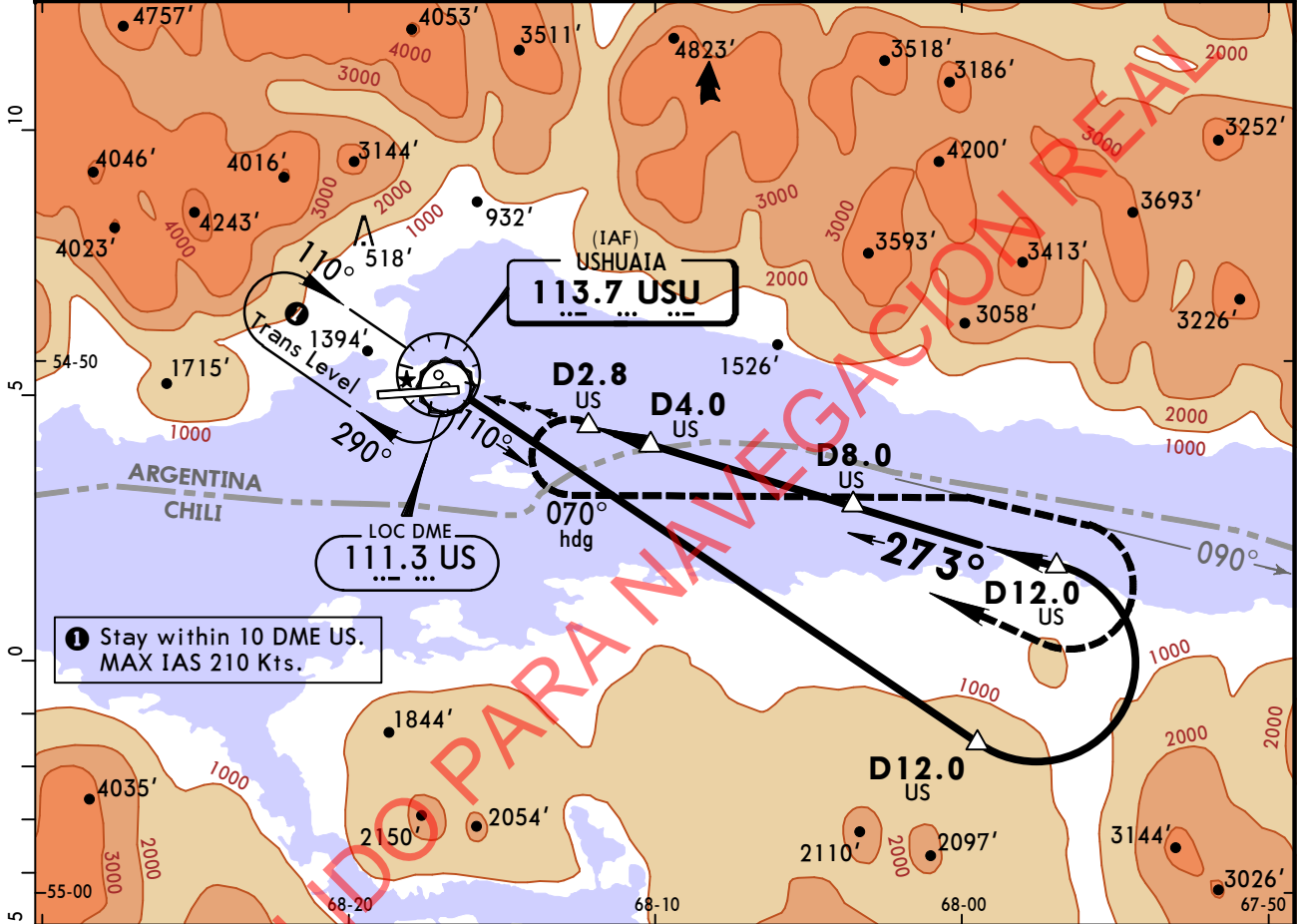
No. 4

MALVINAS ARGENTINAS

CAT A & B

VOR (US) DME Rwy 25

ATIS 127.8		USHUAIA Approach 118.1		USHUAIA Tower 118.1	
VOR USU 113.7	Final Apch Crs 273°	Minimum Alt D4.0 US 1500' (1426')	MDA(H) (CONDITIONAL) 1080' (1006')	Apt Elev 102'	8000'
Rwy 74'					
MISSED APCH: Climbing LEFT turn to 070° heading to intercept USU VOR R-090 outbound. Continue climbing to 6000' then turn RIGHT and return to USU VOR at or above 8000'.					MSA USU VOR
Alt Set: hPa Rwy Elev: 3 hPa Trans level: By ATC Trans alt: 8000' 1. CAUTION: Low level wind shear on final segment. 2. DME required.					



Gnd speed-Kts	70	90	100	120	140	160	REIL PAPI-L	LT	070° hdg	USU 113.7 R-090
MAP at D2.8 US										
D12.0 to MAP	9.2	7:53	6:08	5:31	4:36	3:57				

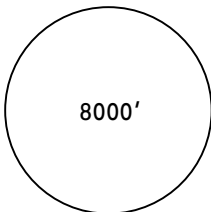
STRAIGHT-IN LANDING RWY 25				CIRCLE-TO-LAND			
MDA(H) 1080' (1006')				Not Authorized North of Runway 07/25			
With DME		Without DME		Max Kts		MDA(H)	
A	4000m	NOT AUTHORIZED		100	1100' (998') -4600m		
B				135			
C	NOT AUTHORIZED	NOT AUTHORIZED		C	NOT AUTHORIZED		
D				D			

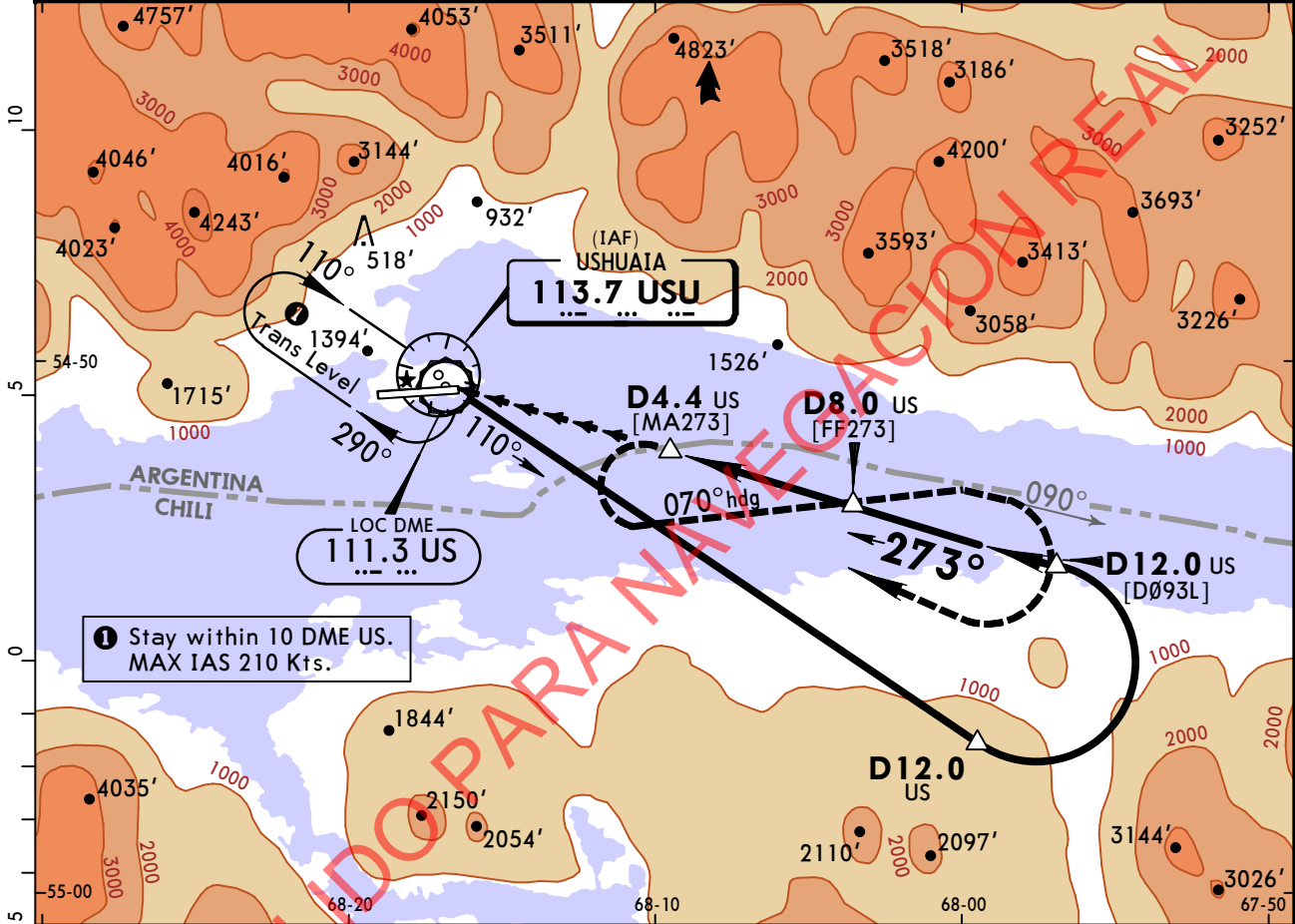
CHANGES: ATIS added.

SAWH/USH

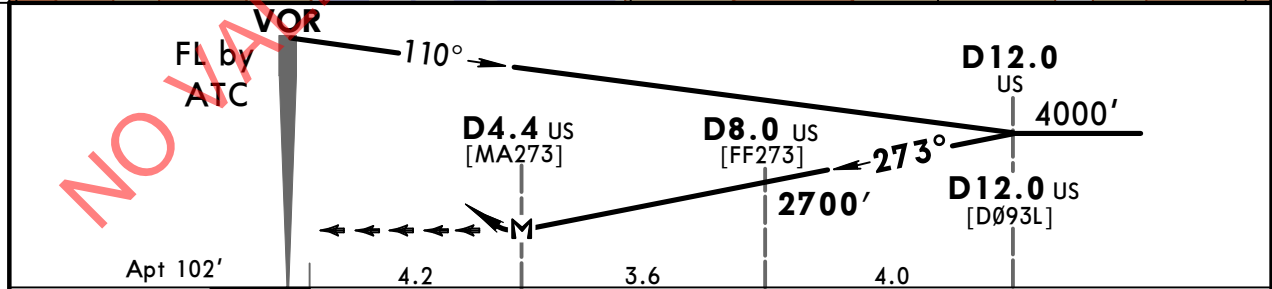
USHUAIA, ARGENTINA
 No. 5 VOR (US) DME or GNSS
 Rwy 07/25 Visual Circling


MALVINAS ARGENTINAS

ATIS 127.8		USHUAIA Approach 118.1		USHUAIA Tower 118.1	
VOR USU 113.7	Final Apch Crs 273°	Minimum Alt D8.0 US 2700' (2598')	MDA(H) Refer to Minimums	Apt Elev 102'	
MISSED APCH: Climbing LEFT turn to 070° heading to intercept USU VOR R-090 outbound. Continue climbing to 6000' then turn RIGHT and return to USU VOR at or above 8000'.					
Alt Set: hPa Apt Elev: 4 hPa Trans level: By ATC Trans alt: 8000' 1. CAUTION: Low level wind shear on final segment. 2. DME required.					



1 Stay within 10 DME US.
 MAX IAS 210 Kts.



Gnd Speed-Kts	70	90	100	120	140	160	Lighting - Refer to Airport Chart		070° hdg	USU 113.7 R-090
MAP at D2.8 US										
D12.0 to MAP	7.6	6:31	5:04	4:34	3:48	3:15				

CIRCLE-TO-LAND Not Authorized North of Runway 07/25											
<table border="1"> <tr> <td></td> <td>Max Kts</td> </tr> <tr> <td>A</td> <td>100</td> </tr> <tr> <td>B</td> <td>135</td> </tr> <tr> <td>C</td> <td>180</td> </tr> <tr> <td>D</td> <td>205</td> </tr> </table>		Max Kts	A	100	B	135	C	180	D	205	MDA(H) _____ 1580' (1478') -8000m
	Max Kts										
A	100										
B	135										
C	180										
D	205										

CHANGES: ATIS added.